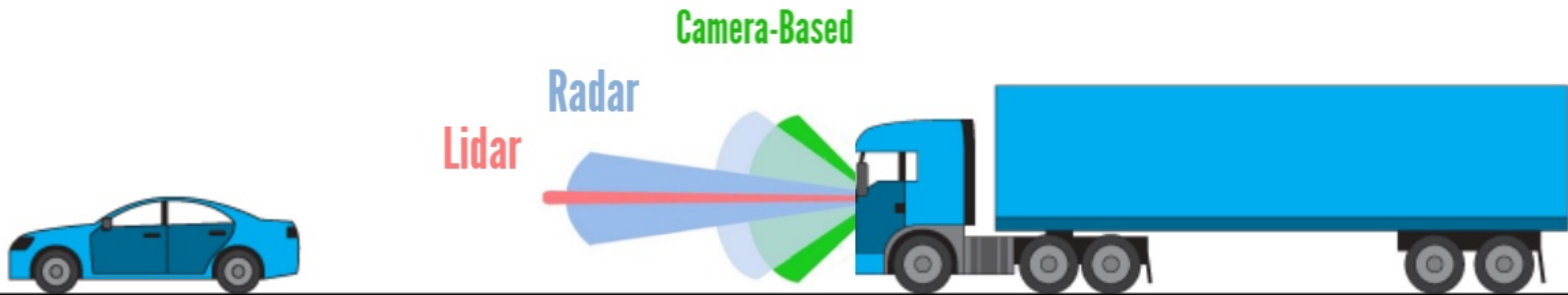


Truck Safety Technology

Automatic Emergency Braking



**Truck Drivers Operating Tractor Trailers with Collision Avoidance Systems*
(Automatic Emergency Braking, Electronic Stability Control, and Lane Departure Warning)
Experienced:**

71%

Rear-End Collisions

63%

Unsafe Following Distance

46%

Improper Lane Change

*Study Collected Data Over 30 Months on More than 12,500 Tractor Trailers

Electronic Stability Control



Prevent 40-56% of Rollovers

**Prevent
1,800-2,300
Crashes Annually**

Speed Limiters



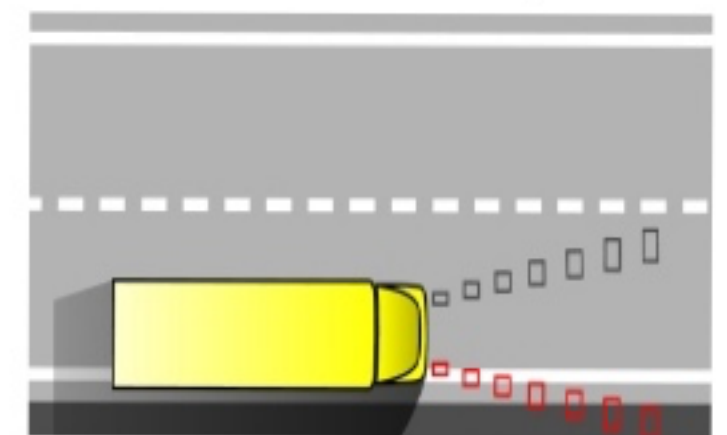
Built in to Most Trucks Since the 1990's

Set at 60mph: Save 162-498 Lives Annually

Nearly 50% Lower Speed-Limited-Relevant Crash Rate

Lane Departure Warning

**Reduce 1,000-2,500
Single Vehicle Lane Departure
Collisions Annually**



**Reduce 2,000-4,200
Sideswipes Annually**