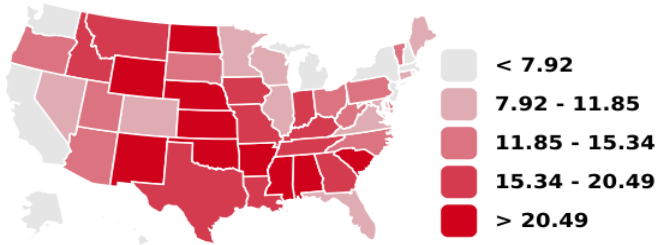
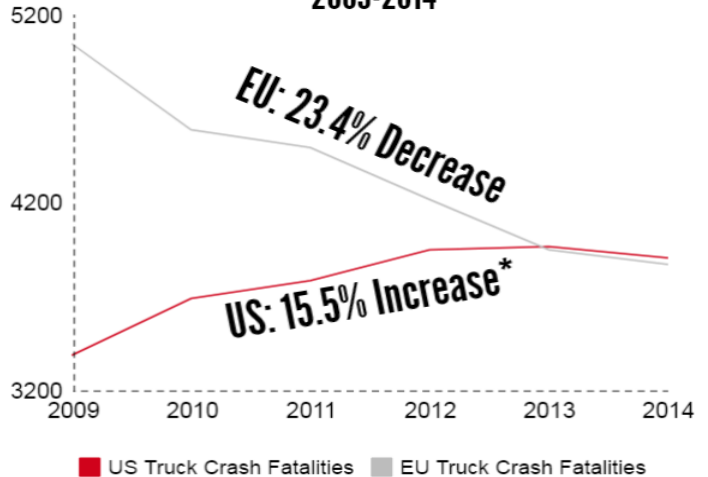


2015 Truck Crash Fatality Rate per Million Population



State	Rate	Rank
North Dakota	62.09	1
Wyoming	47.77	2
Oklahoma	27.10	3
Mississippi	24.06	4
Arkansas	23.50	5
South Carolina	23.28	6
Kansas	22.32	7
New Mexico	22.06	8
Nebraska	21.09	9
Alabama	20.79	10
Texas	20.42	11
Iowa	19.53	12
Montana	19.36	13
Kentucky	18.30	14
Georgia	17.82	15
Indiana	17.67	16
Tennessee	17.57	17
Missouri	17.42	18
Idaho	15.71	19
Louisiana	15.63	20
South Dakota	15.14	21
Ohio	14.38	22
Arizona	13.33	23
North Carolina	12.94	24
Oregon	12.91	25
Vermont	12.78	26
Delaware	12.69	27
Pennsylvania	12.50	28
Utah	12.35	29
West Virginia	11.93	30
Colorado	11.73	31
Minnesota	11.29	32
Florida	11.10	33
Connecticut	10.30	34
Wisconsin	9.70	35
Maryland	9.49	36
Nevada	9.34	37
Virginia	8.35	38
Maine	8.27	39
Illinois	8.01	40
California	7.56	41
Michigan	7.56	42
New York	6.36	43
Washington	5.86	44
New Jersey	5.69	45
New Hampshire	4.51	46
Hawaii	4.19	47
Massachusetts	3.68	48
District of Columbia	2.98	49
Alaska	1.35	50
Rhode Island	0.95	51

Truck Crash Fatalities in United States and European Union 2009-2014



■ US Truck Crash Fatalities ■ EU Truck Crash Fatalities
 *From 2009 to 2015, Truck Crash Fatalities have increased 20%
 2015 EU Truck Crash Fatality is Not Available

In the European Union*,
 the Truck Crash Fatality Rate per
 Million Population is

7.7

*2014 Data, Most Recent Year of Available Data

Regulation	United States	European Union
Automatic Emergency Braking	×	2012
Speed Limiting Devices	×	1992
Side Underride	×	1989
Front Override	×	2003
Entry-Level Driver Training	×	2003
Electronic Logging Devices	2017	2006

In the United States*,
 the Truck Crash Fatality Rate per
 Million Population is

12.65

*2015 Data, Most Recent Year of Available Data. The 2014 Truck Crash Fatality Rate in US was 12.26